



## Contact Us

ABC Head Start (Administration Office)

Rossdale House  
 9829 - 103 Street  
 Edmonton, AB T5K 0X9  
 Ph: (780) 461-5353 Fax: (780) 469-0423

General Inquiries, please email: [info@abcheadstart.org](mailto:info@abcheadstart.org)

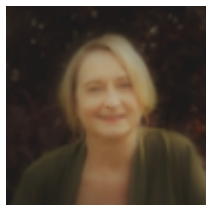
For more information about Registration, please visit the For Parents and Agencies page. You can also send an email to [intake@abcheadstart.org](mailto:intake@abcheadstart.org) about applying for the ABC Head Start Program.

The Administration Office Hours of Operation are: Monday through Friday from 8:30 am to 4:30 pm. (Closed on Statutory Holidays)

### Our Senior Management Team

Walter Lidster - Executive Director Email: <a href="mailto:wlidster@abcheadstart.org">wlidster@abcheadstart.org</a> Tel: 780.461.5353 Ext. 233	
Vacant Director of Strategic & Community Initiatives Research, Planning & Evaluation Email: <a href="mailto:wlidster@abcheadstart.org">wlidster@abcheadstart.org</a> Tel: 780.461.5353	
Laura L. Walker, B.Comm, CPA/CGA Email: <a href="mailto:lwalker@abcheadstart.org">lwalker@abcheadstart.org</a>	Finance Manager Tel: 780.461.5353 Ext.232 
Teresa Ebbert, BHS (App) Director of Program Operations Email: <a href="mailto:tebbert@abcheadstart.org">tebbert@abcheadstart.org</a>	Tel: 780.461.5353 Ext.228 
Christi Lein, BChSt (App.) Manager Email: <a href="mailto:clein@abcheadstart.org">clein@abcheadstart.org</a> 241	Development & Stakeholder Relations Tel: 780.461.5353 Ext 
Angela Buck Services Email: <a href="mailto:abuck@abcheadstart.org">abuck@abcheadstart.org</a> 238 (until May 31, 2018)	Business Manager, Administrative Tel:780.461.5353 Ext 

Debra Milne  
Early Learning and Child Care (ELCC) Manager  
Email: [dmilne@abcheadstart.org](mailto:dmilne@abcheadstart.org)  
Tel: 587.710.0832



[ABC Head Start Classrooms and Family Programming Contact Information](#)

Program Hours of Operation: Tuesday to Friday (Closed on Statutory Holidays)

Morning Classes are from 9:25 am to 12:30 pm Afternoon Classes are from 1:05 to 4:10 pm

*Bussing Information:*

If your child takes the bus and will not be attending program, please contact Southland Transportation Dispatch and report the absence to 780-466-9696 Ext 3.

If you have any questions or need to update your information, please contact the site social worker at the program location that child is attending. Here is a list of cell phone numbers below:

- Duggan Site Program - 780-690-8009
- McKee Site Program - 780-919-9731
- West Campus A Site Program - 587-930-4534
- West Campus B Site Program - 587-930-2966

- Millwoods Campus A/B/C Site Programs - 587-930-4847 / 587-930-5822 / 587-930-6432
- North Campus A/B/C/D Site Programs - 587-930-8202 / 587-930-9789 / 780-224-1658 / 587-930-8157
- North Killarney Site Program - 780-224-5943

We have a dedicated staff member to handle transportation. In the event of a bussing emergency, please contact Maggie Morrison, Coordinator for Intake and Transportation at 780-461-5353 Ext 242 or contact the emergency cell phone at 587-926-7591 after 4:30 pm. You may also contact the Administration Office at 780-461-5353 at any time.